

Harvest Summary of HRW June 14, 2013

By Mark Hodges, Director, Plains Grains, Inc.

- Percent of Harvest

Complete by Location:

○ Texas	35%
○ Oklahoma	15% (but moving fast)
○ Kansas	<1%
○ Colorado	0%
○ Nebraska	0%
○ South Dakota	0%
○ North Dakota	0%
○ Montana	0%
○ Washington	0%
○ Oregon	0%
○ Idaho	0%
○ Wyoming	0%

The 2013 HRW wheat harvest took a big leap this week into **southern Kansas** after hot dry winds dried most areas hardest hit by drought and freeze. Wheat is now being delivered to elevators on the (western side) of south central Kansas along the Oklahoma border. Cutting is now in full swing from north Texas to the Kansas border. Texas is now at the 5-year average for harvested acres (35%) on this date. The southern half of Texas is now 90% complete with cutting, north central areas are over 50% complete, while harvest is just now starting for areas of the Texas Panhandle (that area has suffered severe drought and freeze(s) that will severely affect final yields).

The crop in Texas, Oklahoma and southern Kansas were a week to 10 days behind normal development just a month ago it is now mature and most areas are ready for harvesting. The rapid development was reflected in first 30 samples delivered for evaluation. While test weight and protein are very good, shrunken kernels and small kernels through visual inspection are prevalent from those areas where drought and freeze were major influences during most developmental stages of growth.

Producers and elevator managers have reported yields generally averaging 15 bu./ac to 25 bu./ac (1.0 to 1.7 tons/ha). Test weights are averaging 58 lb to 60 lb/bu (76.4 – 78.9 kg/hl). Early individual location reports of protein have ranged from 10% to over 17%, but have generally averaged between 13% and 14%.

June 14, 2013

Samples

Tst	Exp	MST	Pro %	DKG	TKW	FN	Grade	Test Weight	FM	DMG	S&B	DEF
30	500	11.2	13.5	0.67			2HRW	60.1 79.1	0.1	0.1	2.0	2.2

Final 2012

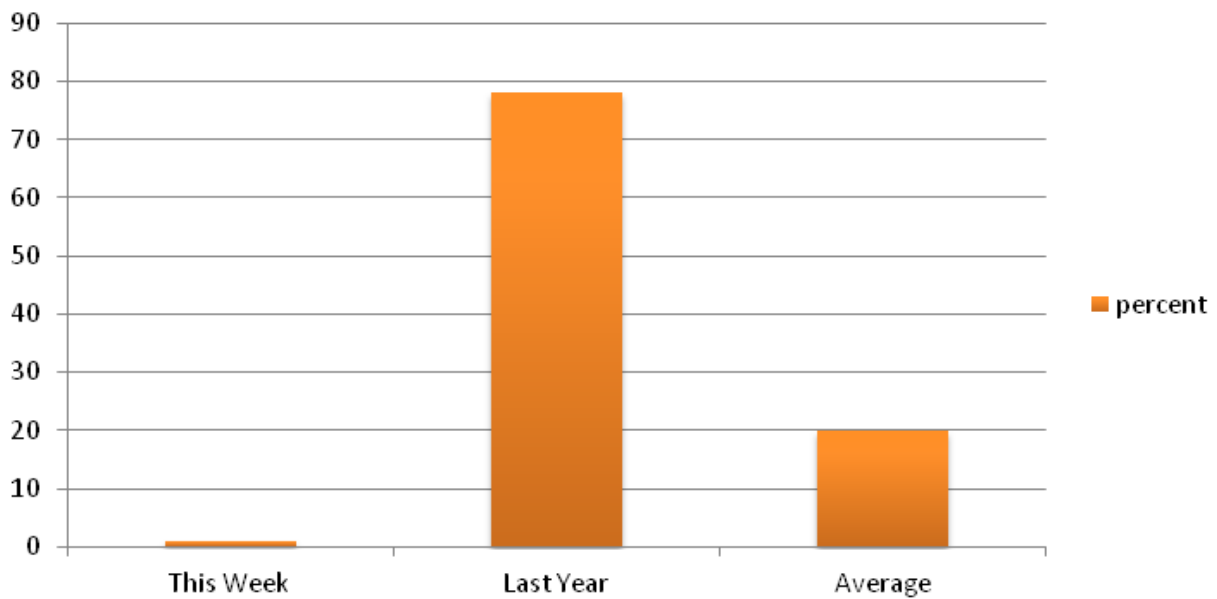
Samples

Tst	Exp	MST	Pro %	DKG	TKW	FN	Grade	Test Weight	FM	DMG	S&B	DEF
538	Final	10.7	12.6	0.48	29.0	409	1HRW	61.1 80.4	0.1	0.1	1.2	1.4

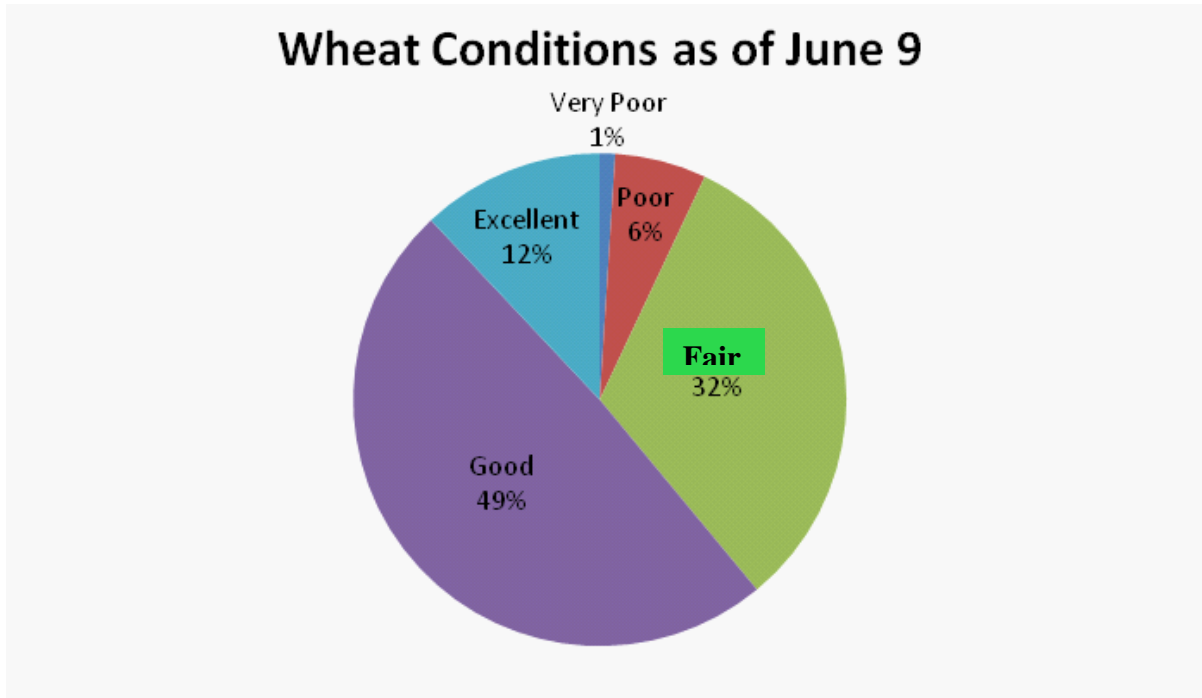
Percent Harvested in Texas by Region as of June 9, 2013



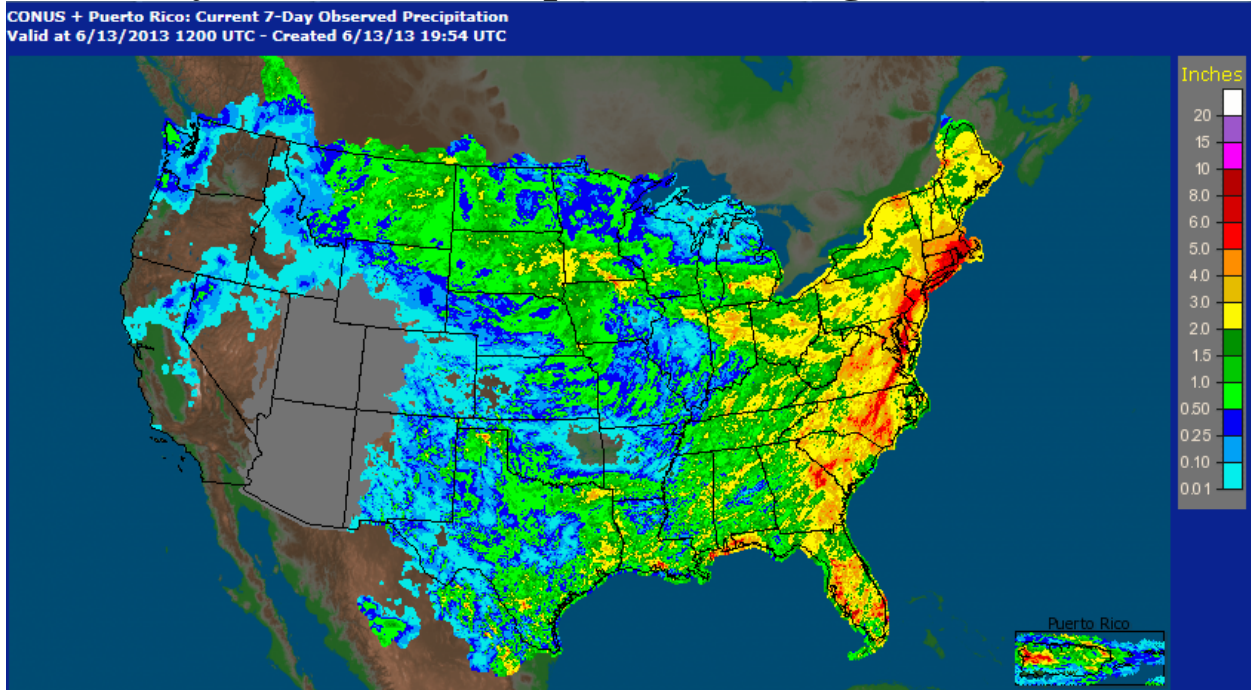
Nebraska Wheat Color Change as of June 9



Nebraska Crop Condition Percentages June 9, 2013



7 Day Observed Precipitation Ending June 13, 2013



Oklahoma Wheat Commission

(405)608-4350

Harvest Reports - 2013

Mike Schulte, Executive Director (405)850-3609

Debbie Wedel, Marketing and Communications (405)334-7750

June 12, 2013

Producers are starting to move back into full swing with harvest after moisture was received in many areas of Oklahoma last week. While the far southwest part of the state has been progressing with harvest, south central regions, central Oklahoma and places in the far North Central region of Oklahoma will seem to begin harvest all at the same time this 2013 season.

Eldorado- So far to date approximately 850,000 bushels have been taken into the Farmers Coop elevator. It is estimated that harvest is half-way complete in this area of the state. Test weights still averaging 60 pounds per bushel. Protein is averaging 14 percent with yields ranging from 15 to 25 bushels per acre.

Headrick- Harvest has been progressing fast in this region. It is estimated that 60 percent of this region is complete with harvesting. Yields are averaging 20 bushels per acre. Test weights have dropped since the rains last week, the test weight is now averaging 58 to 60 pounds per bushel instead of 60 to 62 pounds per bushel. Proteins are averaging 13 percent.

Frederick- Harvest is estimated to be 70 to 80 percent complete in this region. Lower test weights reported in this area ranging from 57 to 58 pounds per bushel. Yields reported to be ranging from 10 to 15 bushels per acre. Proteins are averaging 13 percent.

Grandfield- Harvest in this region is 85 percent complete, test weights are averaging 60 pounds per bushel. Yields are ranging from 5 to 18 bushels per acre with proteins ranging from 13 to 14 percent.

Chattanooga- Yields in this region averaging 10 to 23 bushels per acre. Test weights are doing well and averaging 60 pounds per bushel. Proteins are averaging 14 percent.

Lawton- The area around Lawton is 70 percent complete with harvest. One high yield was reported to make 32 bushels per acre. Other yields are ranging from 20 to 25 bushels per acre. Test weights in this area averaging 60 pounds per bushel. Protein is averaging 14 percent.

Apache- Harvest is just getting started in this area with about 5 percent of the harvest complete. Farmers are still struggling to get over the wet ground in the lower areas of this region. Yields are being reported all over the board. Some fields are reported to be making 20 bushels per acre while other fields are reported to be making 40 bushels per acre. No protein has been reported around Apache.

Cordell- Harvest is just getting a good start in this region. Yields are being reported in the mid to low 20's on that which has been taken in so far. Test weights are averaging 57 to 59 pounds per bushel. No protein has been reported around Cordell.

Clinton- Farmers coop association in Clinton has taken in approximately 12,000 to 13,000 bushels. Yields on early reports in this region are making 10 to 15 bushels per acre. Test weights so far have been averaging 55-58 pounds per bushel. This early report on Clinton will not be representative of other wheat fields in the area that look much better. Those fields happen to be a few more days away from harvest.

Union City- So far 8,000 bushels of grain has been taken in at the Union City Banner Coop Elevator location. Test weights in Union City reported to be making around 60 pounds per bushel. No protein has been reported around Union City.

Banner- As of today three loads of wheat have been taken into the Banner elevator location. It is too early to tell yield on this wheat that was averaging 59 pounds per bushel on test weight. No protein has been reported around Banner.

Okarche- Harvest is slowly progressing in this region. Moisture on wheat being taken in today was ranging from 11 to 13.5 percent. Yields have been reported from 20 to 40 bushels per acre in this region with test weights reported from 58 to 62 pounds per bushel. Protein has been ranging from 10 to 14 on wheat being taken in at this region.

Loyal- Few people have started harvesting around the Loyal area today. It is too early to determine yields from this region. Test weights are ranging from 59 to 61 pounds per bushels. No protein has been reported around Loyal.

Helena- No reports of harvest to be taking place as of yet in this region.

Enid- Harvest is moving North and starting on the southwest regions of Enid as of today. Test weights are ranging from 54 to 63 pounds. A large majority of the wheat being taken in is falling in the 60 pound category. Some yields have been reported to be making 60 bushels per acre in this region with reports on 12 percent protein averages so far.

Jet- It is reported that some people are harvesting in Oklahoma as far North as Jet, Oklahoma. No yield information or test weight data has been reported on the wheat in this area as of today.

Seiling-This afternoon a sample with the moisture of 11.5 percent was collected. It is estimated that harvest will start to begin in this region today and tomorrow.

Panhandle Region-It is estimated that producers will start cutting dry-land wheat in parts of the Panhandle on Sunday or Monday of this coming week.