

PGI HRW Harvest Report June 25, 2021

By Mark Hodges, Executive Director, Plains Grains, Inc.

<u>State</u>	<u>Percent Complete:</u>
Texas	64%
Oklahoma	67%
Kansas	30%
Colorado	0%
Nebraska	0%
South Dakota	0%
Montana	0%
Washington	0%
Oregon	0%
Idaho	0%
Wyoming	0%

6/24/2021: With very favorable harvest weather dominating (high temperatures and lower humidity) over the past week the 2021 HRW wheat harvest continues to pick up speed. As a result, harvest is now 2/3rds complete in Oklahoma and nearing that point in Texas. While Texas has been slowed by wet conditions and muddy fields the pace has picked up significantly over the last week. The predominate average yields being reported continue to range between 40 bu/ac (2.69 tons/ha) to 60 bu/ac (4.0 tons/ha) with most test weights above 60 lbs./bu (78.9 kg/hl). Some slightly lower test weights have been reported in central Texas where very wet conditions prevailed after the crop matured which continues to negatively affect yield as well.

The **Texas HRW wheat crop is now 64% harvested**, those acres are predominately in southern and central part of the state now moving into the northwest region. Harvested acres remain slightly behind the **5-year average of 68%**. Scattered showers and thunderstorms are moving across northwest Texas at this writing.

Oklahoma, (now 66% harvested) and is equal to the **5-year average of 66% harvested** by this date and continues in northern/northwestern parts of the state, along the Oklahoma/Kansas border and the Panhandle region. Oklahoma continues to report very good yields and test weights with wide ranges of protein, but generally 10.5% to 11.5% and an overall “estimated” average of 11.1%. Scattered showers and thunderstorms are moving across the northwest Oklahoma at this writing.

Kansas, (now 30% complete with harvest) and **close to the 5-year average of 24%** by this date. As reported last week, yield, test weight and protein are much like those being reported in Oklahoma. Scattered showers and thunderstorms are moving across the northwest central Kansas at this writing.

The very first samples hit the lab late this week, so limited testing information is currently available.

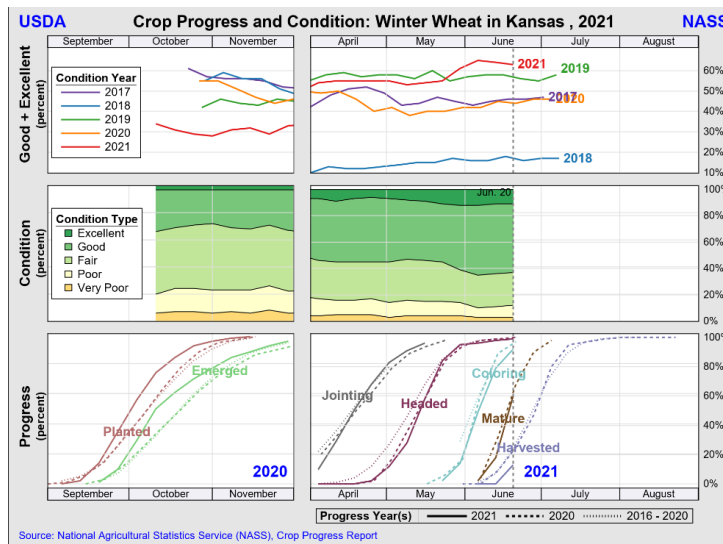
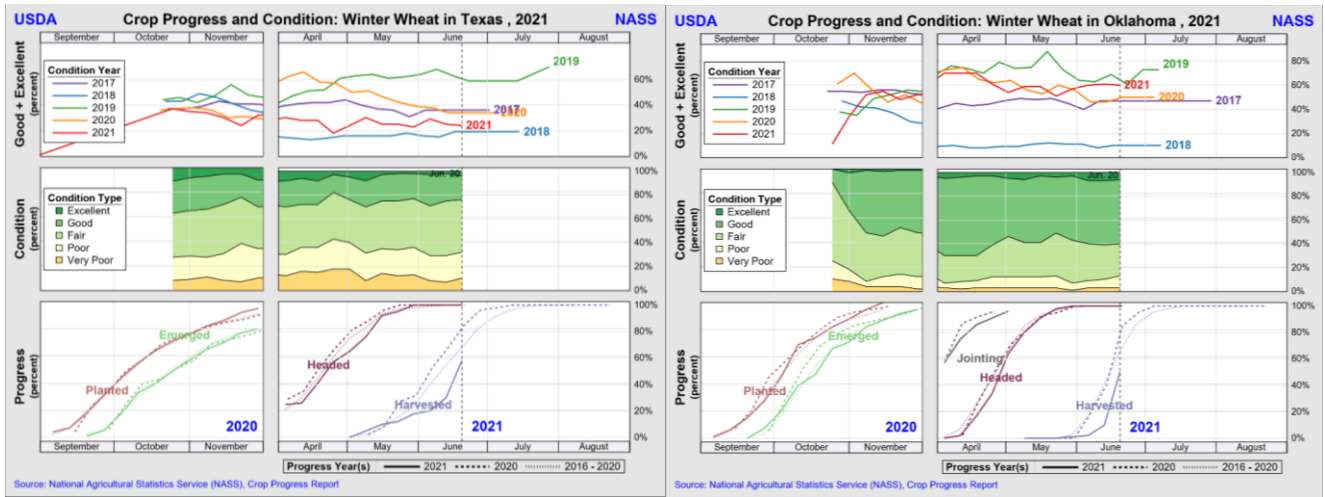
June 25, 2021

Tst	Exp	MST*	Pro %	DKG	TKW	FN	Grade	Test Weight	FM	DMG	S&B	DEF
29	500	10.8			33.7		1HRW	62.2 81.8				

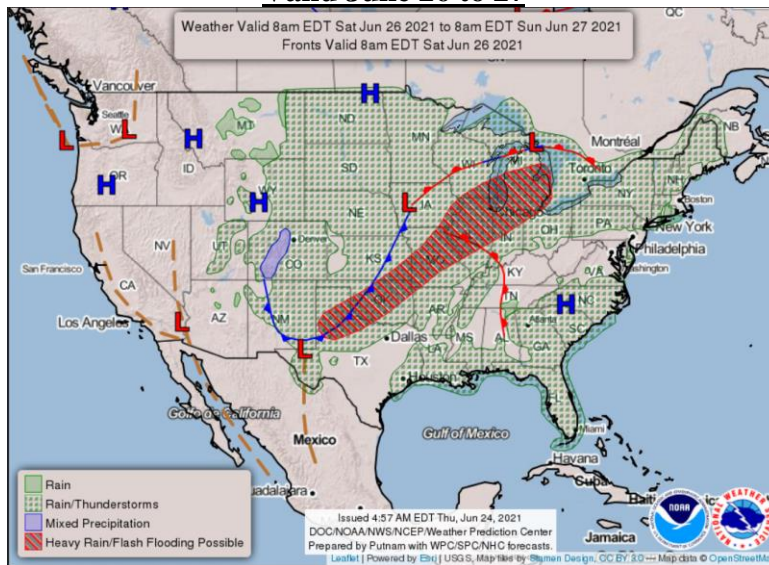
2020 Final

Tst	Exp	MST	Pro %	DKG	TKW	FN	Grade	Test Weight	FM	DMG	S&B	DEF
431	500	10.9	11.9	0.5	31.6	367	1HRW	61.7 81.1	0.2	0.2	1.1	1.5

The information contained herein is provided as a public service with the understanding Plains Grains, Inc. (PGI) makes no claims, promises, or guarantees about the absolute accuracy, completeness, or adequacy of the contents and expressly disclaims liability for errors and omissions in the contents. PGI may make changes to information at any time and add to, remove, update, or correct the information provided. While PGI attempts to maintain the highest accuracy of content, it makes no representations or warranties as to the completeness or accuracy of the information and data. Individuals accessing this website will make their own determination of how suitable the information and data is for their usage and intent. In no event will PGI be responsible for damages resulting from the use or reliance upon this information and data. PGI does not warrant that the use of this information is free of any claims of copyright infringement.



Valid June 26 to 27



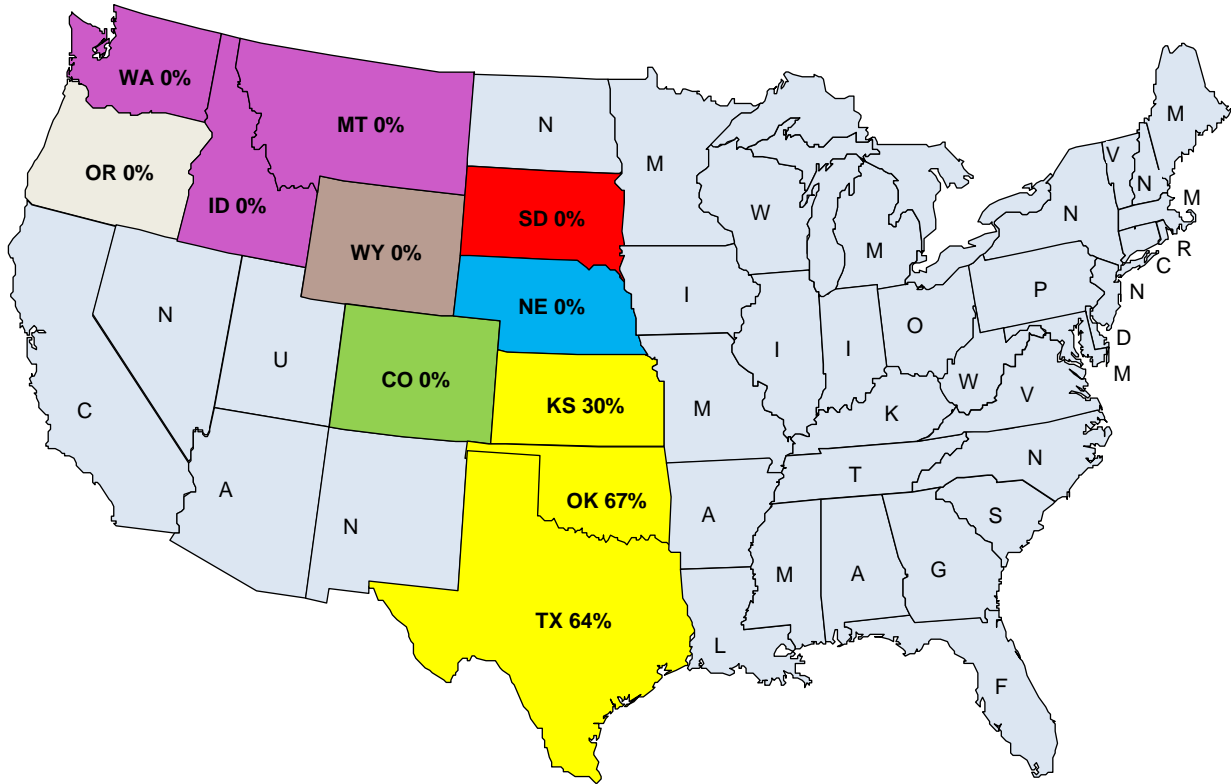
State Bullet Points (abbreviated summary of information provided by the wheat industry):

June 24, 2021

- **Texas** – NASS 58% harvested, super high temps, wind. Some sprout damage, most loads no sprout damage. Dryland short, avg. yields. Varied pro, 10-13/14%. Mostly avg. Good HRW TW, lower SRW TW (moisture/cool weather). Rain forecast this weekend.
- **Oklahoma** – 65% complete, light rain delay. SW OK 95% complete. TW favorable, minimal below 60 lb/bu; isolated lower TW (freeze damage/management practices). Yields mid-40s-mid 60s; USDA 105 mln bu. Expect higher est. 115 mln bu.
- **Kansas** – NASS has 13% Monday, closer to 25% today. Storms forecast, widespread spotty rains, cooler temps next week. Central corridor yields lower, disease presence, heavy rains. Pro 10-11%, some 12. Variability in pro (9-14) moving west. Below avg. pro, good kernel characteristics. No major vomitoxin. Reports of higher dockage. 359 mln bu.
- **Colorado** – 27% fair, 14% E. Some rains/hail over weekend. Temps mid-90s, cooling off. Stripe rust concerns dried up, isolated wheat scab. 6% mature, slight behind 5 yr avg., SE CO 1-1.5 weeks away from harvest.
- **Wyoming** – Expect harvest week of July 20/25th. Little disease pressure, some wheat kernel mite, no saw fly movement. Forecast 60s/low 70s. Looking pretty good. Some reports of swathing.
- **Nebraska** – Hot/Dry. Turning fast across state. SE/SW corner 5-7 days from harvest. Light scattered showers across state. Some stripe rust. Crop looks good.
- **South Dakota** – Little disease pressure. 85% more of state short/very short on moisture. Winter wheat 12% G 0% E, spring 5% G, 0% E. Reports of cutting winter for forage. Hot, dry windy forecast.
- **Montana** – Warm temps. high winds, minimal moisture. Grasshoppers abundant. Winter wheat conditions improved 43% G-E, spring/durum did not. Winter 82% booted, 50% headed; spring 33% booted, 14% headed, durum 80% emerged, 15% booted.
- **Oregon** – Very dry. Very high temps this week/next. Harvest this weekend/next weekend for some.
- **Washington** – 85% of crop less than good. Hot, drought conditions increasing (3-4 days temps over 100). Below avg. crop. Some parts of state looks avg. Harvest 1-1.5 week early. Short stands, conditions very dry. Anticipate increase in SW pro.
- **PGI/NASS** – Dashboard launching next week. 43 samples lab – (mostly OK/TX): TW avg. 63, highest 66, low 61; kernel size good – L-78, M- 21, S-1; protein 11.3%, max 13.7%, low 9.8%; single kernel data: avg. kernel weight 33.7 g; high 39, low 27; diameter 2.76 mm, highest 3, lowest 2.4; single kernel hardness (concerns) – 57, over half samples coming as mixed, lowest 44, highest 73. Continuing to process incoming samples.

Percent HRW Harvested by State

June 25, 2021



Previous 7 Days Precipitation (Ending June 24, 2021)

