

# PGI HRW Harvest Report August 13, 2021

By Mark Hodges, Executive Director, Plains Grains, Inc.

<u>State</u>	<u>Percent Complete:</u>
Texas	100%
Oklahoma	100%
Kansas	100%
Colorado	100%
Nebraska	100%
South Dakota	100%
Montana	80%
Washington	95%
Oregon	98%
Idaho	85%
Wyoming	98%

**8/12/2021:** The US HRW harvest continues to move very quickly and is now winding down in the Pacific Northwest. Remaining states are 80% or more complete as hot and dry weather continues to dominate the weather pattern. Those conditions are in sharp contrast to the extremely wet and humid pattern that prevailed in the southern and central Great Plains during crop maturity continuing through majority of harvest. Those sharp contrasts have also been exhibited via yield, kernel characteristics and protein levels.

There are currently 436 of an expected 500 samples in the lab and are various stages of testing. Overall, there was very little change in data this week with a slight decrease in falling number 367 down from last week's 370. All other parameters did not change as expected with only 18 more samples arriving this week and no new grade information. There have now been 70 composites formed in the lab across 29 grainsheds and broken out by low (below 11.5% protein), medium (11.5% - 12.5% protein) and high (above 12.5% protein). Milling has begun on those samples. 374 individual samples had an test weight avg. 60.6 lb/bu as reported in the table below with a (max 65 lb/bu (85.4 kg/hl) and min 52 lb/bu (68.6 kg/hl) Protein on 381 samples avg. 11.6%, with a (max 16.5% min 8.8%). Large kernel fraction is 66% (2020 63%), med 33%. Single kernel data; 30.3g avg. TKW, kernel diameter 2.58 mm, hardness 61. Sedimentation for 118 samples – 48 vol on a 14 % mb (Vs. 52 in 2020).

## July 30, 2021 (\*FN on 336 samples)

Tst	Exp	MST	Pro %	DKG	TKW	FN*	Grade	Test Weight	FM	DMG	S&B	DEF
436	500	11.4	11.6	0.5	30.3	367	1HRW	60.6 79.7	0.3	0.5	1.0	1.8

## August 6, 2021(\*FN on 204 samples)

Tst	Exp	MST	Pro %	DKG	TKW	FN*	Grade	Test Weight	FM	DMG	S&B	DEF
418	500	11.4	11.6	0.5	30.3	370	1HRW	60.6 79.7	0.3	0.5	1.0	1.8

## 2020 Final

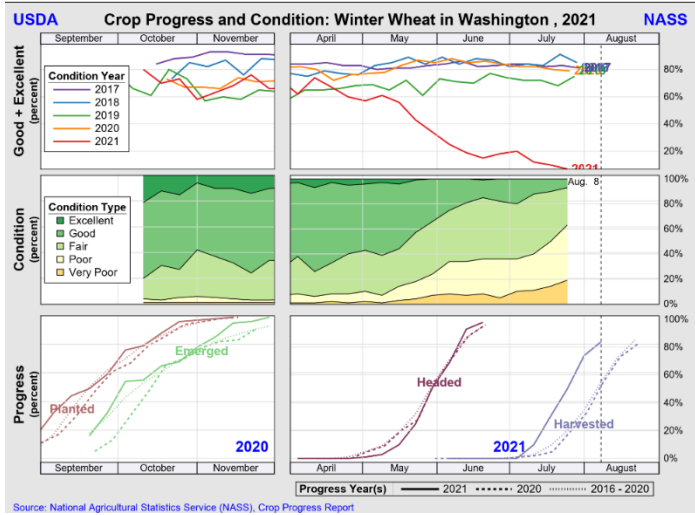
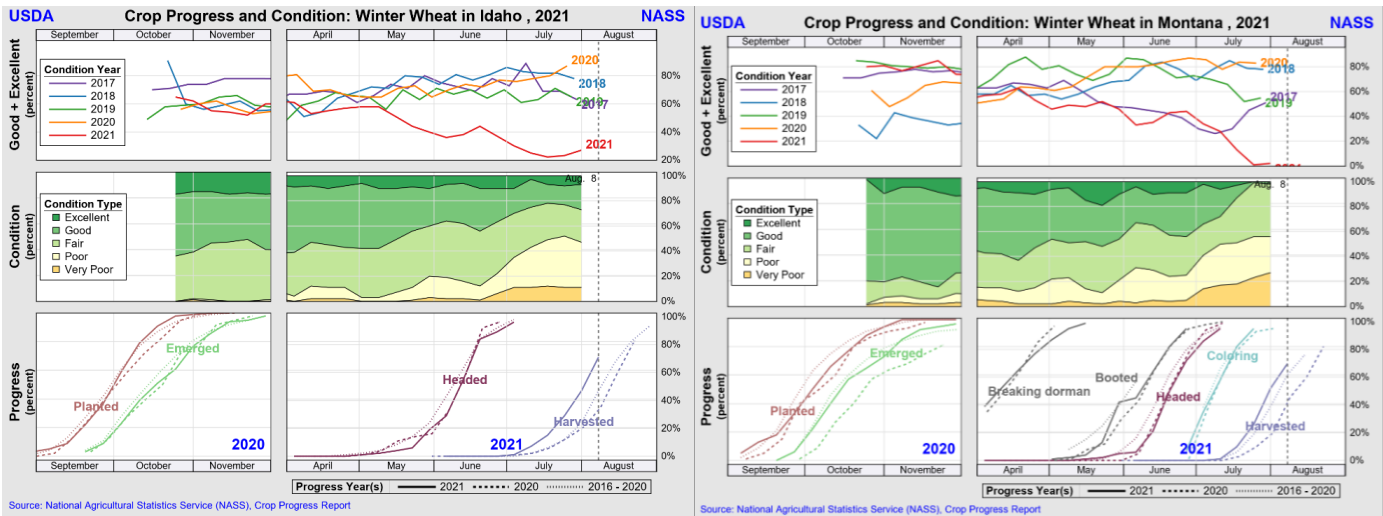
Tst	Exp	MST	Pro %	DKG	TKW	FN	Grade	Test Weight	FM	DMG	S&B	DEF
431	500	10.9	11.9	0.5	31.6	367	1HRW	61.7 81.1	0.2	0.2	1.1	1.5

The information contained herein is provided as a public service with the understanding Plains Grains, Inc. (PGI) makes no claims, promises, or guarantees about the absolute accuracy, completeness, or adequacy of the contents and expressly disclaims liability for errors and omissions in the contents. PGI may make changes to information at any time and add to, remove, update, or correct the information provided. While PGI attempts to maintain the highest accuracy of content, it makes no representations or warranties as to the completeness or accuracy of the information and data. Individuals accessing this website will make their own determination of how suitable the information and data is for their usage and intent. In no event will PGI be responsible for damages resulting from the use or reliance upon this information and data. PGI does not warrant that the use of this information is free of any claims of copyright infringement.

**August 12, 2021**

**Industry Notes:**

- **South Dakota** – Winter wheat harvest complete, spring almost completed. Need rain for planting.
- **Montana** – Winter wheat harvest almost complete. Hot weather forecast. Elevator survey- southern state avg. 59 TW winter wheat. Spring wheat looking better, lower yields but decent kernels, est. 57 lb/bu avg #2 grade. Durum similar to spring, behind, expect lower yields.
- **Washington** – Winter 85% complete, (30% ahead of normal). Extreme heat and dryness. 11.3% protein avg. (WMC), club 11.2%. Variability.
- **Oregon** – NASS more than 92% harvested. Spring 75% harvested (avg. 43%). Moisture concerns for planting/seeding. Very hot and dry.
- **WQC** – Grain trade excited about spring wheat crop. Good TW and pro.
- **PGI/USDA** – Extremes on both export regions (weather, conditions). Pulling samples representative of marketplace. Dashboard up and running. 436 samples, expect under 500 samples total. TX, OK, KS, CO, NE, SD all samples are collected and composites being formed: 70 composites. 374 samples tested avg. 60.6 TW, max 65, min 52, protein on 381 samples avg. 11.6%, max 16.5% min 8.8%, Large kernel 66% (2020 63%), med 33%; single kernel data 30 mg avg. KW, diameter 2.6 mm, hardness 61; falling numbers avg. 367; sedimentation for 118 samples – 48 (Vs. 52 in 2020); some issues in western great plains dough strength impacted, numbers in 1-2 range on 0-6 mixing target, moving east dough strength improves.
- **California** – CQ almost completed, avg. pro for HRW 12%, moisture 9%, TW 64 lb/bu, 341 falling number, farinograph 60%, stability 12 minutes. Durum: avg. pro 13.5%, 7% moisture, 64 lb/bu TW, falling number > 500, pasta color score of 9. Consistent crop quality wise, but a lot of durum going to animal feed.
- **WMC** – No falling number issues. Seeing some wet gluten issues with Club. PNW (WA, OR, ID) HRW, SW, HRS, Club seeing similar data trends - low TW, low moisture, higher pro, smaller kernels.
- **NDSU** – HRS very different when comparing East and West. Expect durum harvest to parallel 2020 harvest (move quickly). One sample at the lab.



## Percent HRW Harvested by State August 12, 2021

