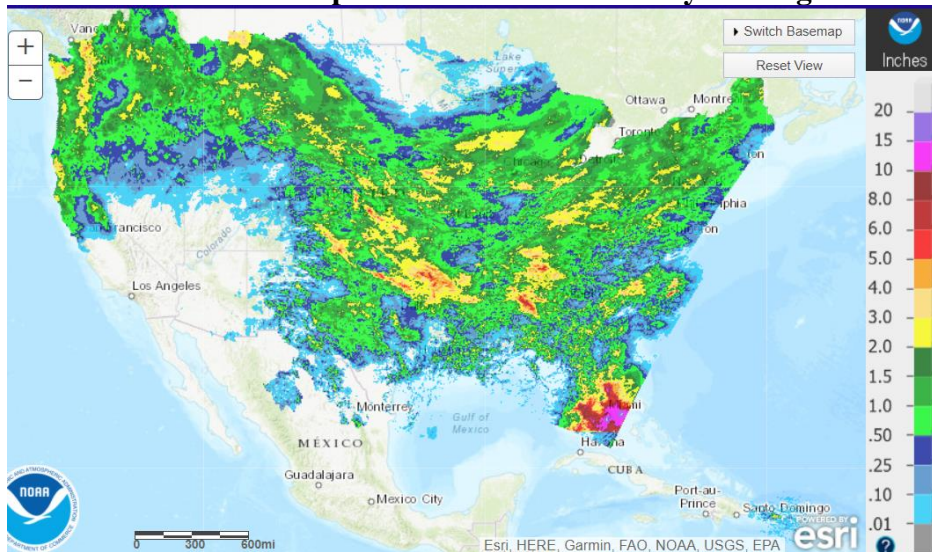


Harvest Summary of HRW June 10, 2022

By Mark Hodges, Executive Director, Plains Grains, Inc.

<u>State</u>	<u>Percent Complete:</u>
○ Texas	36%
○ Oklahoma	22%
○ Kansas	0%
○ Colorado	0%
○ Nebraska	0%
○ South Dakota	0%
○ Montana	0%
○ Washington	0%
○ Oregon	0%
○ Idaho	0%
○ Wyoming	0%

NOAA Observed Precipitation over the last 7 Days ending 6/9/2022



Rain again continued to dominate and delay the 2022 HRW harvest progress over this past week in most parts of Oklahoma and Texas. However, harvest progress did break 35% in Texas and broke 20% in Oklahoma this week. An optimistic forecast for drier weather over the next several days should allow a marked increase in acres cut. The next few days will also likely see harvest begin in Kansas. Early reports on yield continue in the 20 bu/ac to 30 bu/ac range with higher and lower exceptions. Test weights continue generally in the 58 and 60 lb/bu range with and protein ranging a little higher than last week now ranging from 12.0% to 12.5% with some isolated reports over 15%. PGI only pulls samples when at least 30% of the harvest is complete within a geographical area. Wheat samples are now starting to hit the lab and we should have very early testing results included in next week's report. The Oklahoma Wheat Commission extended report starts on page 4.

June 9, 2022

Tst Exp MST Pro % DKG TKW FN Grad Test Weight FM DMG S&B DEF

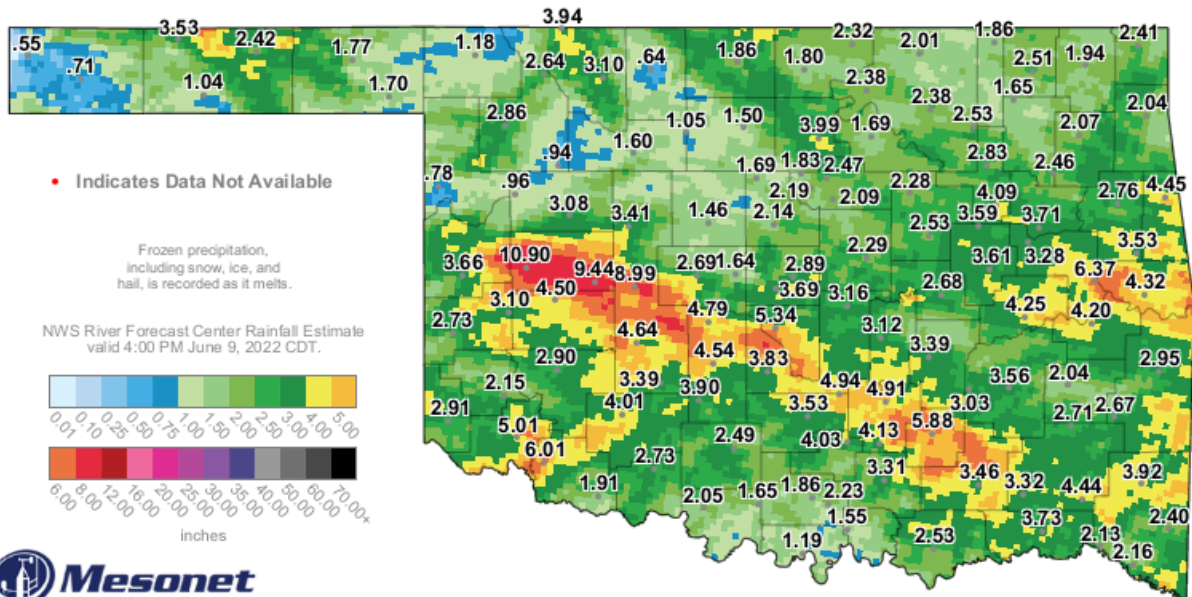
The information contained herein is provided as a public service with the understanding Plains Grains, Inc. (PGI) makes no claims, promises, or guarantees about the absolute accuracy, completeness, or adequacy of the contents and expressly disclaims liability for errors and omissions in the contents. PGI may make changes to information at any time and add to, remove, update, or correct the information provided. While PGI attempts to maintain the highest accuracy of content, it makes no representations or warranties as to the completeness or accuracy of the information and data. Individuals accessing this website will make their own determination of how suitable the information and data is for their usage and intent. In no event will PGI be responsible for damages resulting from the use or reliance upon this information and data. PGI does not warrant that the use of this information is free of any claims of copyright infringement.

States Update:

June 9, 2022

1. **Texas** – 6% G/E. Slow progress due to rain, moving quickly because of low yields, 36% harvested. Nearly complete in south and central TX, good protein ~13%, 15-20 bu/ac, TW avg 60 lb/bu. Blacklands better wheat because more precip. Variable yields in Rolling Plains, about 75% done with harvest. Good protein, avg TW. Really hot and dry this weekend – harvest should pick up in Panhandle.
2. **Oklahoma** – 10% G/E. Only 20% harvested, slow due to rains. Most of progress is in south west. Severe hail damage and heavy rains (~9 in) in many parts of central and south central, likely impact already low yield predictions by making the state average lower. TW have dropped some, 58-59 lb/bu, but all locations are still taking in 60's.
3. **Kansas** – Harvest is getting close, might be some test cutting on the southern border of Kansas this weekend. Storms throughout the state brought heavy rains during the week, and isolated incidences of hail and wind damage on wheat fields. Crop is maturing with 61% of the state coloring. Next week shaping up to be high temperatures and with fields drying out, harvesting will begin in southern Kansas.
4. **Colorado** – 19% G/E. 78% headed, 5% turning color. Variable conditions, variable yields from 15-60 bu/ac. Statewide abandonment is estimated at 30% - by county, varies from 10-99%. Seeing freeze damage in far northeast corner. Rain and hail this week over Eastern Colorado.
5. **Nebraska** – 29% G/E. Varying amounts of rain, hail over past week, with some severe damage. +90% headed. No disease concerns, some sawfly, but nothing reportable. Crop looks good. No storms in near future. Gradual increase in temps.
- 6.
7. **Montana** – HRW 23% G/E, HRS 18% G/E. Winter wheat is just heading out. Over last week .5-2 in of beneficial rain. Still coming out of drought deficit. Just finishing emergence on HRS, region got a lot of rain.
8. **Idaho** – Winter 68% G/E, spring 67% G/E. 1% headed. .10-.25 in rain in southern ID. Prevent plant acres where it's been too wet to get in field. About 3 weeks behind. Ratings are improving. Weather outlook: 80's this weekend, next week chance for precip and lower temps.
9. **Washington** – Winter 71% G/E, spring 88% G/E. Timely rains, cool temps – making weeds a challenge. Topsoil conditions continue to improve. Winter wheat is 16% headed, behind 5YA due to cooler temps. Spring wheat is 89% emerged. Outlook – getting rain today, chances for more through Monday. Low temps now and will slightly increase next week.
10. **Oregon** – Winter 58% G/E, 45% headed. Cool, wet weather supporting improved crop conditions, but delaying progress. Warm weather expected, which will help the crop develop.
11. **Ohio** – Crop looks really good. Farmers have been working to get fungicide applications finished. The last 2 weeks have been very rainy across the state.
12. **PGI/ARS** – Have received the first 6 samples from SW OK. TW's avg. 60.2 lb/bu. No other data yet.

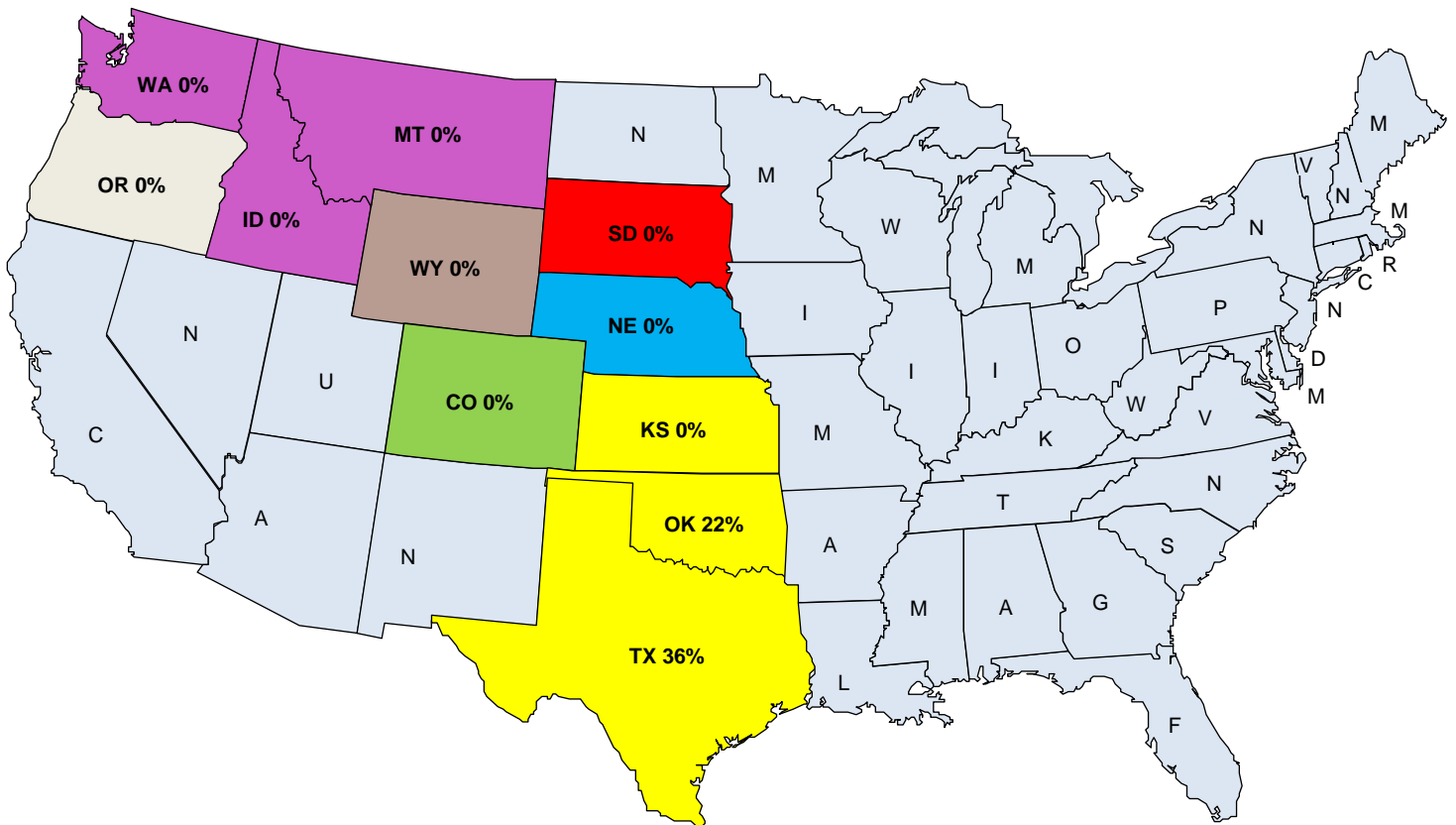
Oklahoma Observed Precipitation over the last 10 days ending 6/9/2022



10-Day Rainfall Accumulation (inches)

5:25 PM June 9, 2022 CDT
Created 5:29:33 PM June 9, 2022 CDT. © Copyright 2022

Percent HRW Harvested by State June 9, 2022



Oklahoma Wheat Harvest Progresses Slowly with Continued Rains

Oklahoma Harvest Report

By: the Oklahoma Wheat Commission

Tuesday June 7, 2022

Oklahoma Wheat harvest continues to move forward at a slow pace due to untimely rains across the wheat belt. Different moisture amounts have been recorded at different times throughout the past week. Rains hindered progress in parts of Central, North Central and Northwest Oklahoma yesterday and early this morning. In some areas between Clinton and Hydro, 4 to 5 inches of moisture was reported by producers depending on locations. (In some instances, these large amounts came within one hour during the morning hours of June 7.) The past couple of days and this weekend, harvest has been making progress in Southwest Oklahoma around Grandfield, Frederick, Lone Wolf, Hobart and Altus. Harvest also has made progress in parts of Central Oklahoma around the Cashion, Okarche, Kingfisher, Omega and Watonga areas. Test weights have dropped some in these Southern and Central regions with more 58 and 59's being reported; however, 60 pound test weights are still being received in all locations that are taking wheat. In Northern Oklahoma on early samples, it is thought test weights will still be favorable because the wheat was not fully ripe. Yields have gotten better as harvest has moved North, in the Cashion, Okarche, Kingfisher and Omega region. We have had reports from 15 bushels to as high as 64 bushels per acre. (The average for this region is being reported in the high 20's to low 30's.) It is important to note in several areas of South Central Oklahoma with locations at Apache, Chickasha, Minco, Hinton and Hydro, producers have really not had an opportunity to get a good start, so nothing has been reported from these locations as far as yield and test weights. Proteins across Oklahoma are ranging from 10 to 17 percent, but overall the majority of the crop is in the 12% to 14% range, with much higher proteins in the Western corridors of the state reporting in the 13% to 15% range. It should be noted we are seeing reports for sprout damage now occurring in locations across the state, but the sprout reports have been minimal with reports of 2% to 5% on some loads depending on variety and location. *The Oklahoma Wheat Commission is now calling Oklahoma wheat harvest 20% completed.*

Grandfield/Frederick- Harvest in this region is 95-97% complete. Test weights ranging from 60 to 61 pounds/bushel. Proteins ranging from 12 to 12.5% range. Yields being reported from low teens to high twenties, averaging in the low 20's.

Lone Wolf/Hobart/ Altus- Harvest in these regions is reported at 50 to 60% complete depending on location. Test weights have dropped slightly and now being reported from 59 to 60 pounds per bushel. Yields ranging from 7 bushels per acre to the mid 20's depending on location, with proteins reported making from 12% to 17%. Most were ranging mainly from 13% to 15%.

Apache- Wheat harvest still has not really started in this region. Four truck loads were taken in yesterday with test weights ranging from 58 to 61 pounds per bushel. No yields or proteins have been reported as they are waiting for a more representative sample. 1/10th of an inch of rain was received this morning, so producers are hopeful they will get rolling more this afternoon.

Sentinel/Rocky- Harvest has made slow progress in this region from last week due to light rains throughout the week but is considered 30% complete. Test weights reported in the 58 to 61 pound per bushel range. Yields being reported from 14 to 25 bushels per acre. Proteins ranging from 13% to 17% depending on variety and management practices.

Cashion/Okarche/Kingfisher/Omega- Harvest in this region reported to be 10 to 20% completed, depending on location. Test weights have dropped with more falling in the 59 to 60 pound/bushel range than what had previously been reported before the rains in that 61 to 63 pound/bushel range. Yields averaging in the high 20's to low 30's. Proteins have ranged from 10% to 15%, seeing a lot in the 11.5% to 12.5% range.

Clinton/Weatherford/Hydro/Minco/Chickasha- Rains this past week and heavy rains early this morning have hindered harvest from taking place in most of these regions. Harvest in these areas are at a complete standstill.

Greenfield- Harvest is just getting started in this region. Test weights on early samples averaging out in the 59 to 60 pounds per bushel. Yields on early harvest wheat making in the low to mid 20's with hopes better wheat will be harvested in the region once harvest gets rolling. Protein ranging from 11.3% to 14% on early samples.

Shattuck-Wheat harvest has not really started in this region due to light rains received throughout the week. Yesterday afternoon one load was received North of Fort Supply, but quality and yield was not reported as it would not be a representative sample.

Enid- A few loads have been hauled in at a couple locations. Test weights were ranging from 60 to 61 pounds per bushel on early samples. No yields have been reported. Proteins on early cuttings averaging 12.5%. This is based on less than 5 loads being received.

Burlington- A couple of samples were received Sunday and Monday. Moisture was mid 14's on Sunday and Monday was 15 percent. Light drizzle was received this morning. It was thought some might try harvesting this afternoon if the sun comes out. No yields, test weights or protein reported as no loads have been taken in.

Oklahoma Wheat harvest made great strides in South Central and Southwest, Oklahoma over the Memorial Day weekend with producers getting started in regions as far north as Omega and Hennessey with some minor cutting being reported by Seiling. Moisture has been challenging for producers in Central Oklahoma and variety selections made a difference on whether producers were able to get into the fields or not this past week in central Oklahoma. Rains have now delayed harvest from moving forward in all regions of Oklahoma that began on Tuesday evening. Reports from across the state have been fairly consistent on yields being reported mainly in the mid teens to mid 20's, across most Southern and Western regions. The occasional yield of 30 to 40 bushels have been reported on non-grazed management intensive ground. We have had one or two reports of some fields making 51 to 52 bushels per acre. It is thought yields will be better as harvest moves further North and reports have trended higher on yields in Central, Oklahoma around the El Reno, Okarche, Kingfisher, Omega areas. Yields in these regions are mainly being reported in the mid 20's to mid 30's depending on the variety and management practices. Producers have made great strides down around Grandfield, Tipton, Altus, Fredrick, Walters with approximately half of the crop being reported as harvested. Harvest is just beginning in the Chickasha and Apache regions with producers getting good starts. Heavy rains in several areas of Southwest Oklahoma from Hollis, Tipton, Altus to Frederick last night will most likely have an impact on quality from here on out. South of Altus it was reported that they received 3 inches at the OSU research station and East of Altus some areas received 6 inches of moisture in less than an hour. Flash flooding happened in several places from Hollis, Tipton and Altus to Frederick. It was reported that a rail line was washed out in Headrick early this morning. Several places have been without power in this region as of this morning, due to high winds that knocked down power lines. While yields have been below average the quality of the crop up to this point has been extremely favorable. All the data on quality was taken before the late Tuesday evening /early Wednesday morning rains, so producers are concerned what things will look like once they get back into the fields.